

Overview & Scrutiny Committee

Streetspace measures

1st December 2021

 @lb_southwark

 facebook.com/southwarkcouncil



Background

- Highway measures were introduced from 2020 under Experimental Traffic Management Orders (ETMOs)
- To assist social distancing and encourage active travel by reducing car use, promoting walking and cycling, and improving the on-street experience.
- Locations based on a range of considerations
 - Our Healthy Streets – Dulwich project
 - Walworth Low Emission Neighbourhood
 - Guys & St Thomas Foundation funded

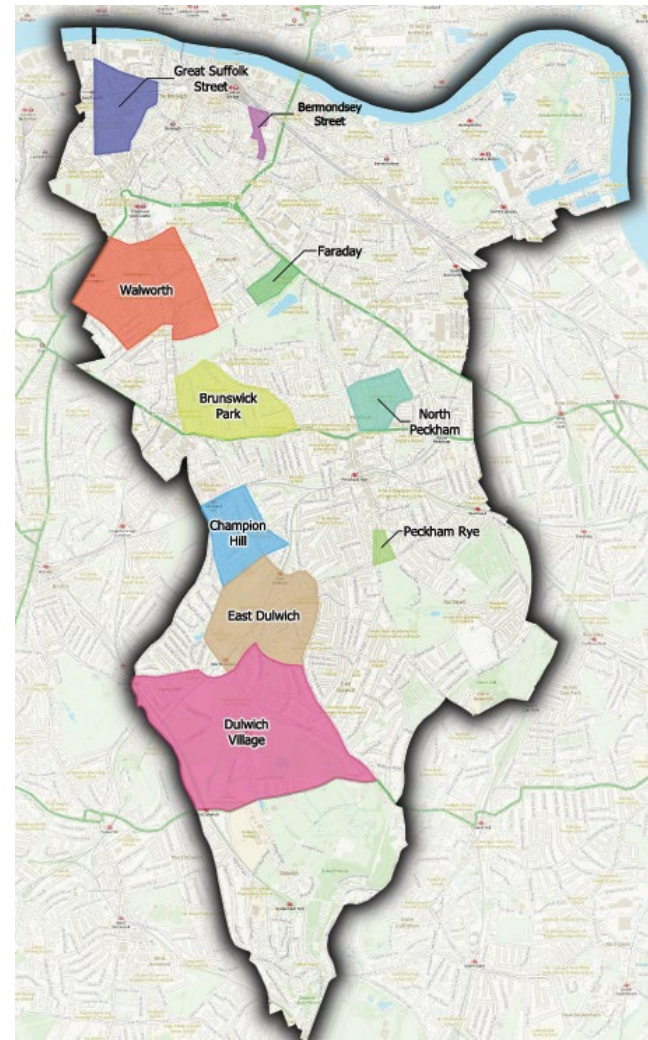


Ambition

- Make our roads **safer** for all residents and visitors.
- Make walking and cycling an **enjoyable**, safe and easy way of getting around, improving access to public transport for longer journeys
- Clean up our air, **reducing pollution** and noise levels, and creating a greener and healthier environment for everyone.
- **Reduce** the amount of cut-through traffic so all feel safer on local roads, as well as reducing parking pressure for local residents.
- Help **tackle the climate emergency**, reducing the carbon emissions from vehicles in Southwark, as they are one of the biggest contributors to emissions locally.
- Encourage people to **shop local**, so our local high streets flourish



Post pandemic streetspace measures in Southwark



 @lb_southwark

 facebook.com/southwarkcouncil



Process

- Determination of location
- Streetspace measures implemented via ETMO for max duration of 18 months
- 6 month initial objection period
- Review/consultation
- Decision taken on future of measures – published to council website and subject to call-in process



Process (continued)

- Subject to any call-in process, permanent TMO advertised with associated 21 day objection period
- Determination of objections – published to council website and subject to call-in process
- Permanent TMOs implemented (dependent on outcome of objection and/or call-in process)
- Ongoing review/monitoring for any mitigatory or complementary measures



Streetspace Review Process

- Summary of response rate by scheme

SCHEME	ADDRESSES	RESPONSE RATE
Dulwich	21,000 +	37.5% (25.5%")
Walworth	19,956	8%
Bermondsey	3,303	20%
Brunswick Park	5,390	10%
North Peckham	1,190	11%
East Faraday	1,034	5%
Peckham Rye East	2,072	7.7%
Great Suffolk Street	4,902	8.3%
		* Response rate of those living in the area



Current position

Streetspace location	Position on 01/12/21
Dulwich Village	Determination of objections to proposed permanent TMOs – decision 2/12/21
East Dulwich	Determination of objections to proposed permanent TMOs – decision 2/12/21
Champion Hill	Determination of objections to proposed permanent TMO – decision 2/12/21
Walworth	Published and subject to Scrutiny call-in process by 1/12/21. If no call-in, next stage is permanent TMOs and stat consultation.



Current position (continued)

Streetspace location	Position on 01/12/21
Bermondsey Street	Published and subject to Scrutiny call-in process by 1/12/21. If no call-in, next stage is permanent TMOs
Great Suffolk Street	Published and subject to Scrutiny call-in process by 1/12/21. If no call-in, next stage is permanent TMOs
North Peckham (Guys & St Thomas Foundation scheme)	Published and subject to Scrutiny call-in process by 3/12/21. If no call-in, next stage is permanent TMOs



Current position (continued)

Streetspace location	Position on 01/12/21
Brunswick Park (Guys & St Thomas Foundation scheme)	Published and subject to Scrutiny call-in process by 3/12/21. If no call-in, next stage is permanent TMOs
East Faraday (Guys & St Thomas Foundation scheme)	Published and subject to Scrutiny call-in process by 3/12/21. If no call-in, next stage is permanent TMOs
Peckham Rye East	Published for initial call-in, earliest decision date 8/12/21 before proceeding to Scrutiny call-in 5 day period. If no call-in, next stage is permanent TMO.



Countering misinformation

- Use of social media to spread false, misleading and incorrect information
- Example misquoting WHO guideline figures for nitrogen dioxide levels
- We have not entered into a social media interaction
- Monitoring Data: Traffic Counts / Active Travel and Air Quality to continue in all areas
- Area Reviews after 12 months



New WHO guidelines

- Released in September 2021 - reduced the limits for all old guideline pollutants and introduced for carbon monoxide
- GLA to assess impact on current Mayor's air quality policies and amend as required
- Council to work towards meeting new WHO Air Quality Guidelines in the Borough
- Officers note this will be difficult and currently awaiting the GLA assessment results



New WHO guidelines (cont'd)

- Overall air quality is improving across the Borough but traffic congestion causes peak times of exposure
- Not unique to LTNs (hotspots across the Borough)
- LTNs have a part to play in the overall council strategy (along with ULEZ) to achieve the 2030 targets
- Same principle applies to bus delays



Any Questions

 @lb_southwark

 facebook.com/southwarkcouncil

